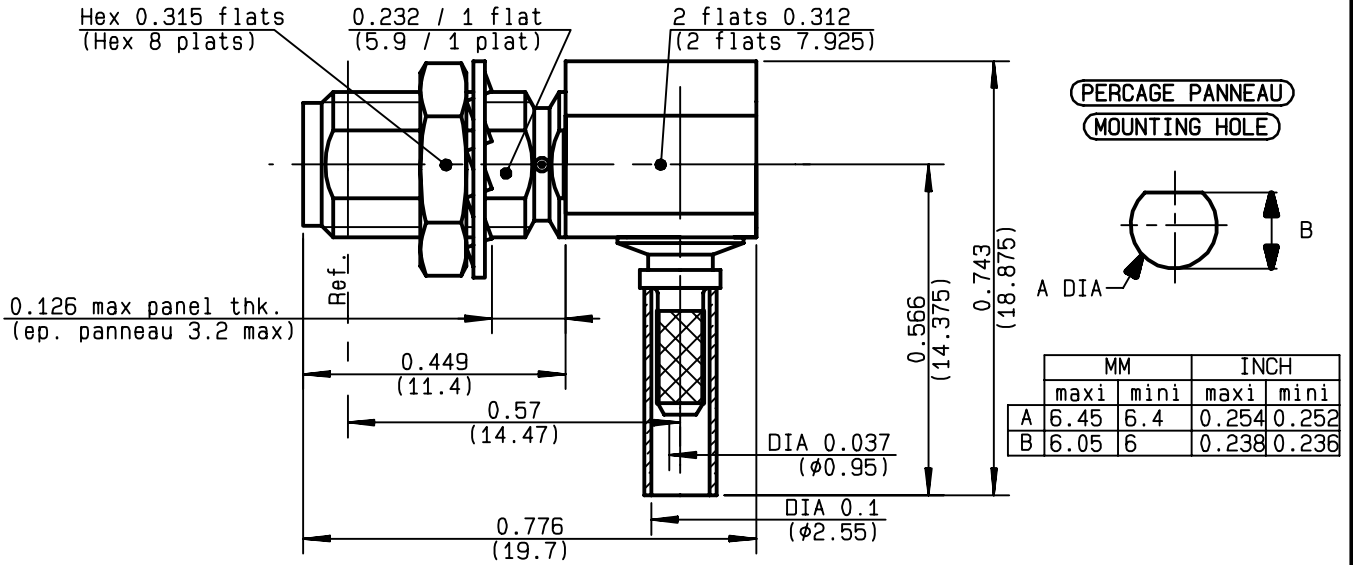


**RP RIGHT ANGLE SMA BULKHEAD JACK  
CRIMP TYPE CABLE 2/50 S**

**R300.124.323  
SERIES REV POLARITY**



NOMINAL IMPEDANCE	<b>50</b> Ω
FREQUENCY RANGE	<b>0-12.4</b> GHz
TEMPERATURE RATING	<b>-65/+165</b> °C
V.S.W.R	<b>TBD</b> + x F(GHz)Maxi
RF INSERTION LOSS	<b>TBD</b> √F(GHz) dB Maxi
VOLTAGE RATING	<b>250</b> Veff Maxi
DIELECTRIC WITHSTANDING VOLTAGE	<b>750</b> Veff Mini
INSULATION RESISTANCE	<b>5000</b> MΩMini
HERMETIC SEAL	<b>NA</b> Atm.cm <sup>3</sup> /s
LEAKAGE (pressurized only)	<b>NA</b>
MECHANICAL DURABILITY	<b>100</b> Cycles
WEIGHT	<b>5.2</b> gr
SPECIFICATION	

CABLES : **KX 21**  
**RG 178**  
**RG 178 LC**  
**RG 196**

OTHERS CHARACTERISTICS

CABLE RETENTION	<b>45</b>	N Mini
CENTER CONTACT RETENTION		
Axial force - mating end	<b>27</b>	N Mini
Axial force - opposite end	<b>27</b>	N Mini
Torque	<b>NA</b>	cm.N Mini
RECOMMENDED TORQUES		
Mating	<b>NA</b>	cm.N
Panel nut	<b>150</b>	cm.N
Clamp nut	<b>NA</b>	cm.N

CONNECTOR PARTS	MATERIALS	FINISH
BODY	BRASS	GOLD 0.2 OVER NICKEL 2
OUTER CONTACT		
CENTER CONTACT	BRASS	GOLD 1.3 OVER COPPER 2.5
INSULATOR	PTFE	-
GASKET		-
OTHERS PIECES	BRASS	GOLD 0.2 OVER NICKEL 2

(all values are given in micrometers)

MASTRIANO

ISSUE <b>0306C01</b>	CREATION DATE <b>06/08/1998</b>	FILE PART-NUMBER <b>98-0400-910</b>
-------------------------	------------------------------------	--



**RADIALL®**

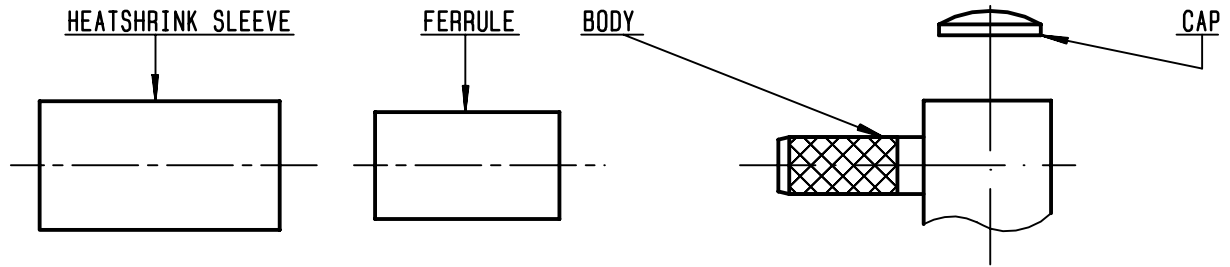
The information given here is subject to change without notice.  
Design changes may be in order to improve the product.

*Connect to the future*



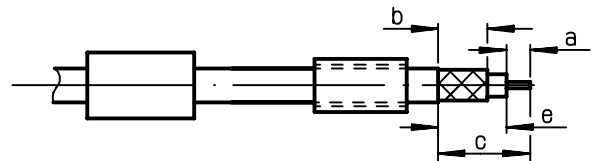
**R300.124.323**

ISSUE 0306C01 SERIES  
REV POLARITY



①

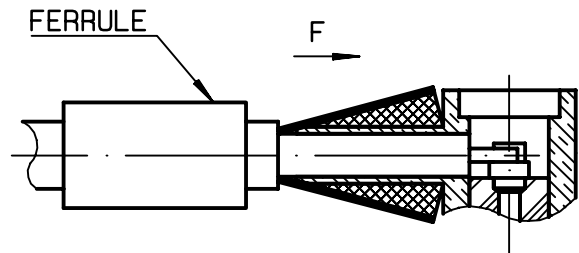
Slide ferrule and heatshrink sleeve onto cable .  
Strip the cable .  
-  
-



Stripping	a	b	c	d	e
inch	0.071	0.217	0.48	0	0.409
mm	1.8	5.5	12.2		10.4

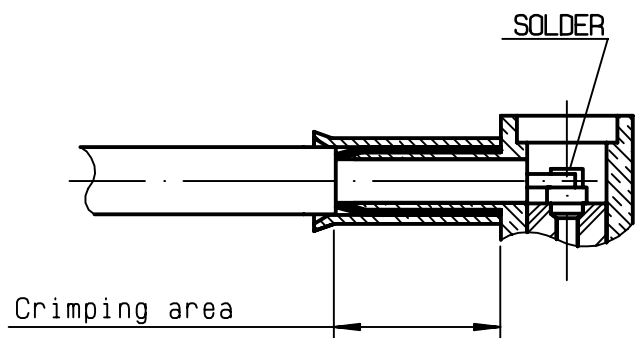
②

Fan the braid .  
Push connector body under the braid .  
Slide ferrule over braid  
( in direction F )  
-  
-



③

Crimp the ferrule with crimping tool R282 211 000 ( Hex. : 0.105 ) or crimping tool R 282 293 000 ( M22520/5-01 ) + dies R 282 235 003 ( M22520/5-03 ) Solder inner conductor .



④

Place the cap into body.  
Press cap flush or slightly below surface of body assembly .  
Slide sleeve over ferrule and heatshrink in place .  
-  
-  
-

